



S.Y. Wong CEng MIEE



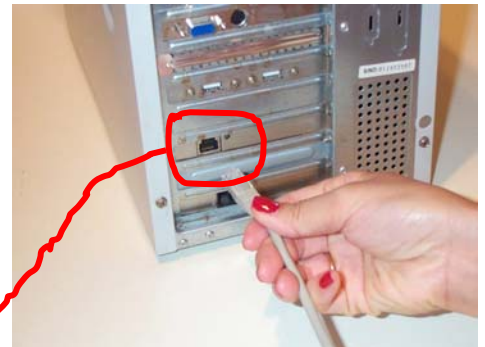
DN-WLAN-006
July 2003

HONGKONG BROADBAND NETWORK (HKBN) Wireless Broadband Setup Quick Reference

Special points of interest

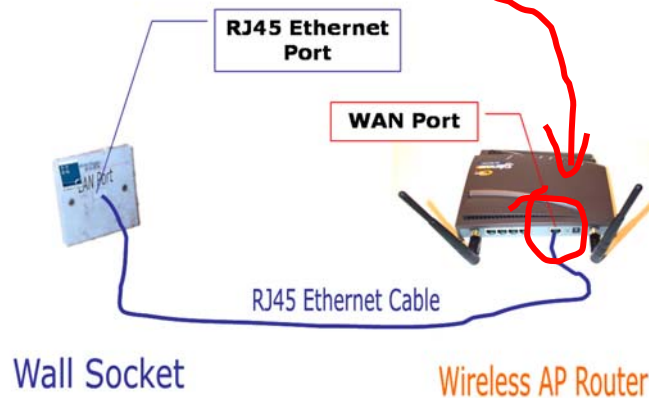
- Showing you the physical cable connection of the wireless AP Router and the HKBN LAN port.
- Setting the wireless AP Router for either the “Automatic Configuration—DHCP”.
- Setting up HKBN Login procedures.
- Verifying the broadband connection.

To extend your HKBN Internet access to wireless, you will simply disconnect your Ethernet cable from your PC and plug it to the WAN port of the wireless AP Router using a Dynamic IP configuration. We are going to talk about the setting in the AP Router as well as the Login and Logout procedures for HKBN Broadband Internet service.



STEP 1 - Unplug the RJ45 Ethernet Cable that runs from the HKBN's wall socket

Connecting the HKBN Ethernet port to the Wireless AP Router



STEP 2 - Plug it straight into the WAN Port of the wireless AP Router.

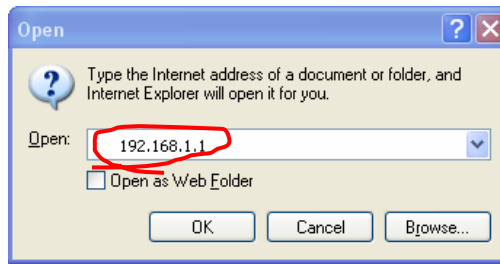
Setting the Wireless AP Router for Automatic IP Configuration—DHCP

Power up the wireless AP Router.

the installation guide of “Building your 11/54Mbps High-Speed Home/ Office wireless network with a step-by-step approach” (Ref: DN-WLAN-02). You can find it at [Http://www.danets.com/application_e.htm](http://www.danets.com/application_e.htm).

If you haven't set up your wireless PC client, we suggest you to work on it with Once your wireless PC client is up and

running, double click your web browser, press “Ctrl-L” together and key in the address 192.168.1.1, this is going to bring you to the “Login” of the Access Point Router. At default, skip the User-name and key in “admin” at the Password box. If you have changed the Password previously, make sure that you key in your own. Hit “Enter” to get to the SETUP page.



STEP 3 - To access the system administrator of the AP Router, open your Internet Explorer, press “Control-L” keys together and key in “192.168.1.1”, then press OK

When the SETUP page pops up, choose “Automatic Configuration—DHCP” as the Connection Type. Leave the Host Name and Domain Home as blank unless you know exactly what to enter. Click “Apply” then “Continue”.

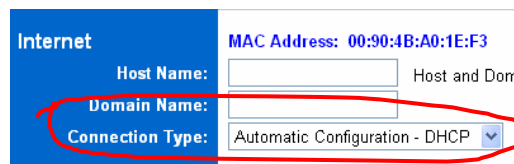


STEP 4 - When this screen pops up, skip the User name, enter your Password (default as “admin”), then press OK

At the STATUS page, you will be able to see “Connected” with the IP and DNS addresses assigned by your office or campus LAN. Otherwise, check the cables carefully before making the reconnection.

Login and Logout Procedures for HKBN Broadband Internet Service

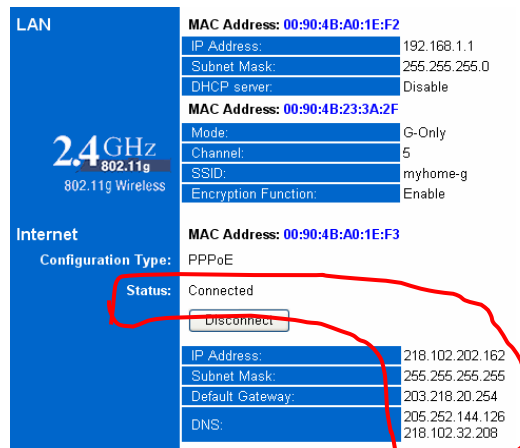
At this stage, you’ve got to login HKBN before you can use the broadband Internet service.



STEP 5 - Choose “Automatic Configuration—DHCP” as the Connection Type, then click “Apply”

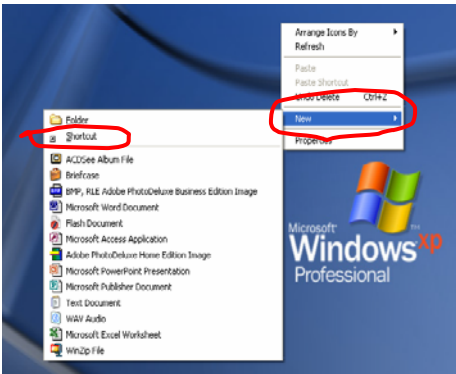
To create a Login/ Logout Desktop icon, right-click your mouse at Windows Desktop, then select “New” and click “Shortcut”. At the “Create Shortcut” screen, type in “http://sso.hkbn.net” then click “Next”. Select a title for the Program by keying “HKBN Login” as the Shortcut icon title, then click “Finish”.

A “HKBN Login” Shortcut icon is now created at the Windows Desktop. Double click it to Login. Key in your HKBN Login ID and Password listed in your HKBN installation order form (Password should be your HKID without the last bracketed number. e.g. E123456), then click “Login” to access the broadband service. See also the instruction diagrams on next page. **d**



STEP 6 - The “Status” screen refreshes every six seconds. It shows a bunch of IP and DNS addresses if the AP router is connected to HKBN

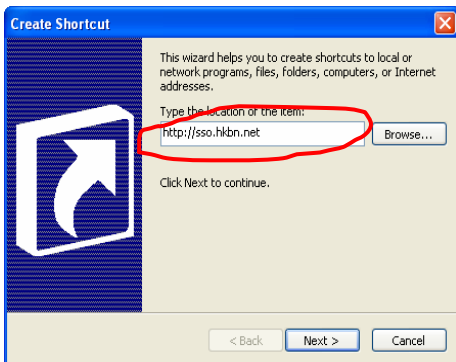
When the SETUP page pops up, choose “Automatic Configuration—DHCP” as the Connection Type. Leave the Host Name and Domain Home as blank unless you know exactly what to enter.



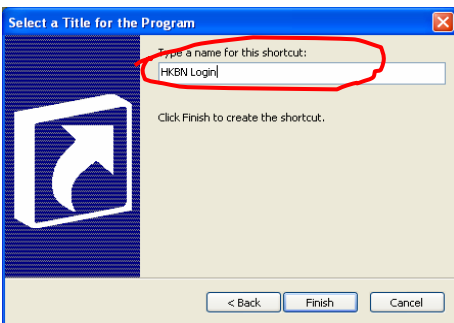
STEP 7 - To create a Login/ Logout Desktop icon, right-click your mouse at Windows Desktop, then select "New" and click "Shortcut"



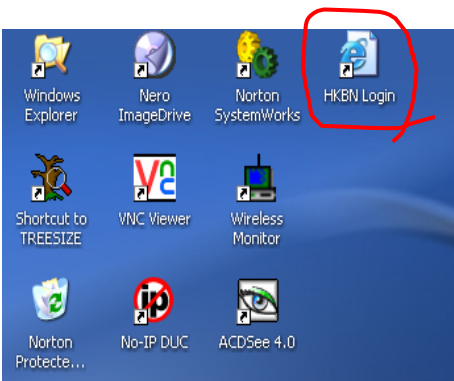
STEP 11 - To Login, key in your HKBN Login ID and Password listed in your HKBN installation order form (Password should be your HKID without the last bracketed number), the click "Login"



STEP 8 - Type in "http://sso.hkbn.net", then click "Next"



STEP 9 - Key in "HKBN Login" as the name of your Shortcut icon



STEP 10 - A "HKBN Login" Shortcut icon is now created at the Windows Desktop.

Key in your HKBN Login ID and Password listed in your HKBN installation order form (Password should be your HKID without the last bracketed number. e.g. E123456), then click "Login" to access the broadband service.

danets

S.Y. Wong CEng MIEE

DataCom Network Ltd.
1505 Ricky Centre
Kwun Tong
Hong Kong

Phone: +852 2951 0321
Fax: +852 3141 9209
Email: marcom@danets.com



We are on the web!

Please visit www.danets.com

In today's environment, it's all about getting back to the basics. We focus on our core competence to improve the fundamentals of personal mobile communications - unwiring the mobile terminals using "Carrier Class" technologies with fun and productivity.

We differentiate our products and services with competitive quality and price performance, plus a deep understanding of the RF (wireless) and networking technologies in our planning and installation service offerings. How do we do that? We work directly with the manufacturers to obviate gaps in our supply chain, gain the economy of scale so that we can get you the cost benefits and the after-sales services.

For further information, please call +852 2951 0321 or email: marcom@danets.com

The registered trademarks belong to the respective companies.

Specifications are subject to change without notice.

HONGKONG BROADBAND NETWORK (HKBN) Wireless Broadband Setup Quick Reference



Special points of interest

- Showing you the physical cable connection of the wireless AP Router and the HKBN LAN port.
- Setting the wireless AP Router for either the "Automatic Configuration—DHCP".
- Setting up HKBN Login procedures.
- Verifying the broadband connection.

