

Quick Setup Guide

AirStation WHR-HP-G54 High-Power Wireless Cable/DSL SmartRouter



BUFFALO™

Preparation

This Quick Setup Guide will guide you through installing your new Buffalo router. For advanced setup and configuration instructions, please refer to the Product Manual, available on the AirNavigator CD-ROM or from the Buffalo Support Web Page.

Package Contents Checklist

- Wireless Cable/DSL Router (WHR-HP-G54)
- External Antenna
- Utility CD-ROM w/ User Manual
- Quick Setup Guides
- AC Adapter
- 7ft. Ethernet Cable
- Warranty Statement

If any of the contents are missing or damaged, please contact the retailer or reseller from which this product was purchased.

Step 1 - Gathering Information

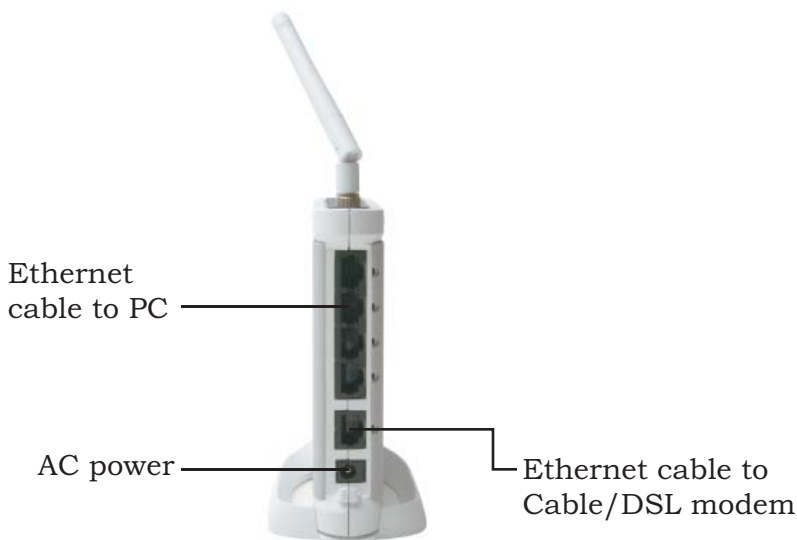
Depending on the type of broadband internet service you are subscribed to, different pieces of information may be needed to complete the setup. In particular, most DSL providers require PPPoE information to log in to your connection. Call your internet service provider's customer or technical support number to find if any special information is required for you to connect to the internet.



Note your AirStation's LAN MAC address. This will be the default SSID of your wireless network. You can find the LAN MAC address on the bottom of the AirStation.

MAC Addresses are 12-digit codes comprised of numbers and letters. When inputting MAC Addresses for custom configurations, a semi-colon (;) is used to separate every two digits. ex: **00:0D:0B:87:00:4C**

Step 2 - Connecting the AirStation



1. Power down the Cable or DSL modem and the computer which will be used to configure the AirStation router.
2. Screw external antenna on to top of AirStation.
3. Plug the Cable or DSL's LAN Ethernet cable into the AirStation's WAN port. Initially, you may need to unplug this cable from your computer, hub or other router.
4. Plug the provided Ethernet cable into a LAN port on the AirStation and plug the other end into your computer's Ethernet adapter's (NIC) port. If you plan to initially configure the AirStation wirelessly (not recommended), you may skip this step.
5. Power on your cable or DSL modem and wait one full minute, then power on the AirStation router (by plugging in its power) and wait another minute, and finally power on the computer which will be used to configure the AirStation. If the red DIAG light on the AirStation is still lit or flashing after several minutes of being powered on, please consult Buffalo Technology Technical Support.

Notes on Wireless Configuration:

If you have a PC connected to the router with a wired connection, we recommend that you use it to configure your AirStation. That said, if necessary, you can still configure your AirStation with a wireless connection.

Consult your wireless client card or adapter's documentation to confirm that it's correctly installed with all necessary drivers.

Does your client support AOSS? If so, configuration is very simple. Just push the AOSS button on your router, push the AOSS button on your client, and voilà, 15 seconds later, your wireless network will be configured. Consult your AOSS supplements for more information on how to use AOSS. If your client's AOSS button is in its software, you'll have to install the software before using AOSS.

The default SSID of the AirStation is its LAN MAC Address (see page 2). Using your wireless card's software or Windows XP's Wireless Zero Config, connect to the Wireless Network that broadcasts the LAN MAC Address of your AirStation as its SSID.

Out of the box, the AirStation router does not have any encryption set up, so initially disable any encryption settings in your wireless adapter's configuration.

Please consult the documentation that came with your wireless client card or adapter for further assistance.

Step 3 - Configure your Computer's IP Address

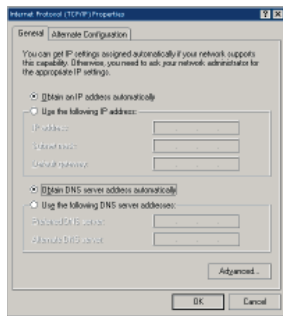
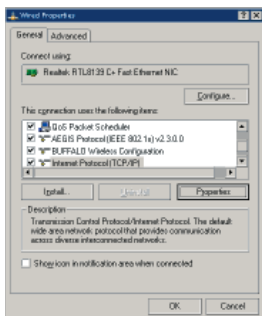
Navigate to your TCP/IP Properties and make sure that both *Obtain IP address automatically* and *Obtain DNS Server address automatically* are selected:

In Windows 98SE/ME:

- Right-click on *Network Neighborhood* or *My Network Places* and select *Properties*.
- Select the *Configuration* tab, scroll down to TCP/IP and press *Properties*.
- Select *Obtain IP address automatically* and *Obtain DNS Server address automatically* if they're not already selected.
- Click *OK* to close Internet Protocol (TCP/IP) Properties.
- Click *OK* to close Network Connection Properties.
- Close Network Connections window.

In Windows 2000/XP:

- Click *Start => Settings => Control Panel*.
- Double click on the *Network Connections* icon.
- Right-click on your *Local Area Connection* (for a wired connection) or *Buffalo Wireless* (for wireless connection) and select *Properties*.
- Scroll down to Internet Protocol (TCP/IP) and press *Properties*.
- Select *Obtain IP address automatically* and *Obtain DNS Server address automatically* if they're not already selected.
- Click *OK* to close Internet Protocol (TCP/IP) Properties.
- Close Network Connections and Control Panel windows.



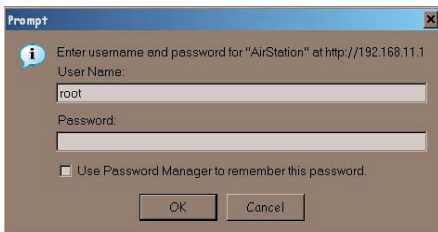
Step 4 - Access the AirStation Configuration Pages

Launch your Web browser, type *192.168.11.1* in its address field, and click *Go*. Of course, if you've changed your AirStation's LAN IP address, enter the new LAN IP address instead.



If at any time you wish to restore settings to factory defaults, press the red INIT button on the bottom of the AirStation for 15 seconds. Do not let go of the INIT button until the red DIAG lights up or flashes. The restore process can take up to two minutes.

Step 5 - Configure the AirStation



This dialog will ask for your User name and password.

Enter *root* as the User name. Leave the password field blank.

Click *OK*.

The WHR-HP-G54 will automatically detect whether your internet is from a DSL or Cable provider and ask you for any necessary information.

- **DSL**

If you have a DSL connection, you will probably have to enter your PPPoE login information. Get this information from your ISP if you don't know it.

- **Cable**

Most Cable providers require no additional settings to obtain an IP address. If your connection requires a DNS server to be set up manually, a wizard will ask you for the necessary information. Get it from your cable provider if you don't know it.

Default Settings

If at any time you wish to restore your AirStation's settings to factory defaults, press the red INIT button on the bottom of the AirStation for 15 seconds. Do not let go of the INIT button until the red DIAG lights up or flashes. The restore process can take up to two minutes.

This completes basic AirStation configuration. To change advanced settings, please consult the Online Manual on the CD-ROM or go to the Buffalo Web Site: **<http://www.buffalotech.com>**

The AirStation can be reconfigured anytime via a Web browser using a wired or wireless connection by entering *192.168.11.1* (or the new IP address, if you've changed it) in the URL address field of the Web browser and pressing the *Enter* key on the keyboard.

Additional Information:

AOSS (AirStation One-Touch Secure System)

The WHR-HP-G54 supports Buffalo's AOSS system for connecting AOSS compatible wireless clients to the WHR-HP-G54. For information about AOSS, please refer to the AOSS Supplement which is included in the WHR-HP-G54 package contents.

IP Addressing

To verify your IP settings for static or automatic addressing, click *Start*, select *Settings* (if present) and click *Control Panel*. Within *Control Panel*, double-click *Network* or *Network Connections*. You can then right-click on any of your wired or wireless connections and select *Properties*. Within the properties, you can view the properties of your TCP/IP protocol.

Generally, you will want to be sure that *Obtain an IP address automatically* is selected to allow easier connections. To manually renew IP addressing configurations for your connection, follow these steps:

- Click *Start* and *Run*. A dialog box will appear where you can type *cmd* into the field provided and click *OK*.
- An MS-DOS prompt will launch. Enter *IPCONFIG /RELEASE* and press the *Enter* key on the keyboard to release your current IP configuration. Next, enter *IPCONFIG /RENEW* and press the *Enter* key to seek new settings from a DHCP server. (This may take a few moments).
- Type *IPCONFIG /ALL*. This will display all the IP configurations for your wired or wireless connection.
- The Default Gateway address listed in the results is usually the IP address of the AirStation. If no IP addresses are listed or your wireless adapter displays a *169.254.XXX.XXX* address, retrace the setup steps to verify correct installation.
- Type *EXIT* to close out the DOS window.

Buffalo Technology Technical Support

Buffalo Technology offers Toll-Free Technical Support 24 hours a day, 7 days a week for this product. Customers in the United States and Canada can obtain technical support using the following information:

- Product Manual: Available on the AirNavigator CD
- Web: www.buffalotech.com
- E-mail: info@buffalotech.com
- Telephone: 866-752-6210 (USA & Canada only)

The constantly evolving state of wireless products and operating systems requires Buffalo Technology to occasionally release updated software to take advantage of new technologies and to comply with industry standards. For the most recent software, firmware, driver, and technical whitepaper releases available, please visit the Buffalo Technology website.

FCC Compliance Statement - See owners manual for complete statement. This device complies with Part 15 of the FCC Rules. Operation is subject to the following two conditions: (1) This device may not cause harmful interference, and (2) this device must accept any interference received, including interference that may cause undesired operation.

R&TTE Compliance Statement - See owners manual for complete statement This equipment complies with all the requirements of the DIRECTIVE 1999/5/EC OF THE EUROPEAN PARLIAMENT AND THE COUNCIL of 9 March 1999 on radio equipment and telecommunication terminal Equipment and the mutual recognition of their conformity (R&TTE).

Copyright © 2004 Buffalo Technology, Inc. All Rights Reserved. - Buffalo Technology (USA) Inc., is part of MELCO INC., the global manufacturers of IT peripherals, including memory, networking, and multimedia products, inside many of the world's computers. All trademarks are property of their respective owners.

** When operating in High Speed Mode™, this Wi-Fi device achieves an actual throughput of up to 34.1Mbps, which is the equivalent throughput of a system following 802.11g protocol and operating at a signaling rate of 125Mbps.*